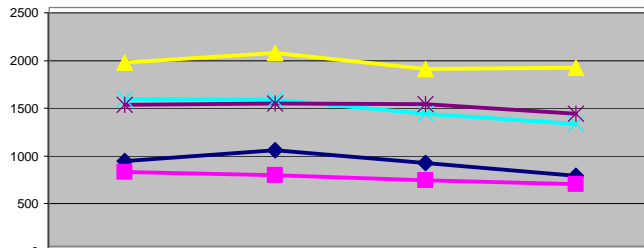


Use the expand tool to magnify the table and charts. Use the graphics selection tool to print out a chart as a full sheet.

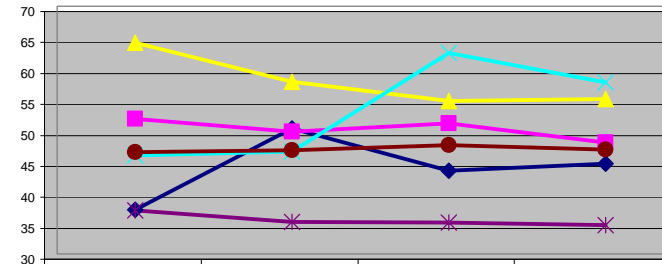
Gates-Chili Mass Counts

Parish	2000 # Masses	2000 Capacity	2000 Potential	2000 Ave Attend	2000 Capacity Used	2001 # Masses	2001 Capacity	2001 Potential	2001 Ave Attend	2001 Capacity Used	2002 # Masses	2002 Capacity	2002 Potential	2002 Ave Attend	2002 Capacity Used	2003 # Masses	2003 Capacity	2003 Potential	2003 Ave Attend	2003 Capacity Used
Holy Ghost	4	600	2400	892	37	4	500	2000	1005	50	4	500	2000	869	43	3	550	1650	736	45
St. Helen's	3	500	1500	777	52	3	500	1500	746	50	3	450	1350	689	51	3	450	1350	647	48
St. Pius Tenth	4	750	3000	1922	64	4	875	3500	2024	58	4	850	3400	1858	55	4	850	3400	1869	55
St. Theodore's	6	560	3360	1544	46	6	550	3300	1535	47	4	554	2216	1384	62	4	554	2216	1279	58
St. Jude the Apostle	5	800	4000	1481	37	5	850	4250	1495	35	5	850	4250	1490	35	5	800	4000	1386	35
Gates Total	22	3210	14260	6617	46	22	3275	14550	6804	47	20	3204	13216	6290	48	19	3204	12616	5917	47

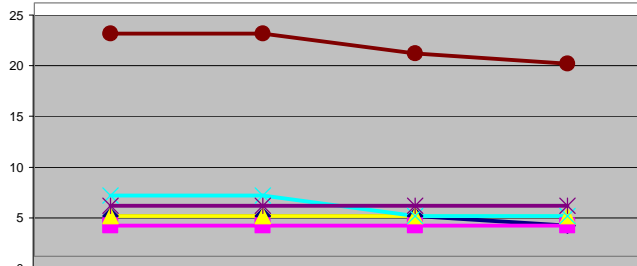
Average Weekend Mass Attendance



Ave Worship Capacity Used (Percent)



Number of Masses



Change in Ave Weekend Attendance (2000=100)

