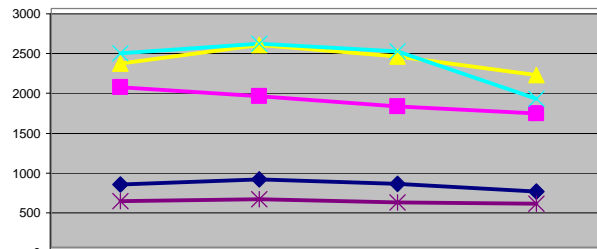


Use the expand tool to magnify the table and charts. Use the graphics selection tool to print out a chart as a full sheet.

Penfield-Perinton-East Rochester Mass Counts

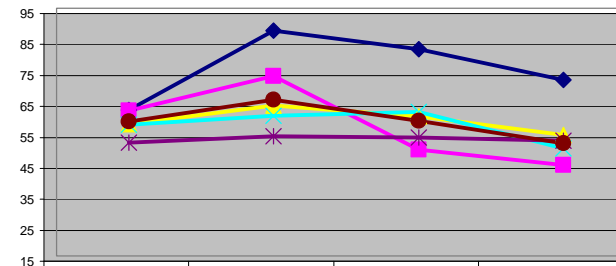
Parish	2000 # Masses	2000 Capacity	2000 Potential	2000 Ave Attend	2000 Capacity Used	2001 # Masses	2001 Capacity	2001 Potential	2001 Ave Attend	2001 Capacity Used	2002 # Masses	2002 Capacity	2002 Potential	2002 Ave Attend	2002 Capacity Used	2003 # Masses	2003 Capacity	2003 Potential	2003 Ave Attend	2003 Capacity Used
St. Jerome's	3	425	1275	792	62	3	325	975	855	88	3	325	975	798	82	3	325	975	700	72
Assumption of Our Lad	5	650	3250	2012	62	4	650	2600	1900	73	4	896	3584	1768	49	4	946	3784	1678	44
St. John of Rochester	5	800	4000	2306	58	5	800	4000	2546	64	5	800	4000	2399	60	5	800	4000	2165	54
St. Joseph	5	850	4250	2436	57	5	850	4250	2558	60	5	800	4000	2460	61	5	750	3750	1868	50
Church of the Resurrec	3	375	1125	580	52	3	375	1125	604	54	3	350	1050	559	53	3	350	1050	547	52
Pen,E Roch,Fair,Per T	21	3100	13900	8126	58	20	3000	12950	8462	65	20	3171	13609	7984	59	20	3171	13559	6958	51

Average Weekend Mass Attendance



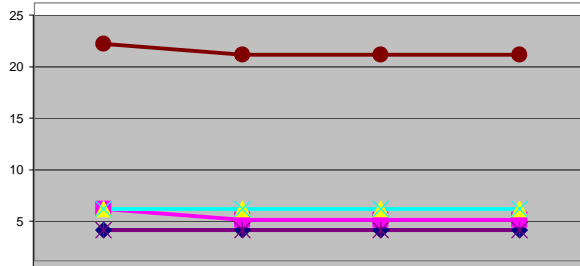
Parish	2000	2001	2002	2003
St. Jerome's	792	855	798	700
Assumption of Our Lady	2012	1900	1768	1678
St. John of Rochester	2306	2546	2399	2165
St. Joseph	2436	2558	2460	1868
Church of the Resurrection	580	604	559	547

Ave Worship Capacity Used (Percent)



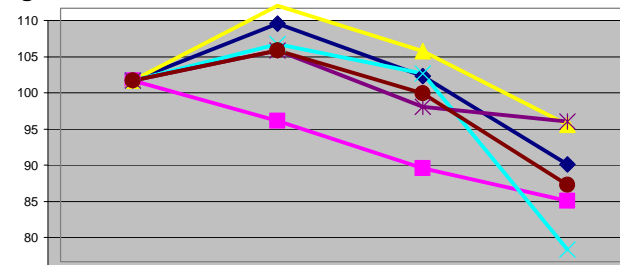
Parish	2000	2001	2002	2003
St. Jerome's	62	88	82	72
Assumption of Our Lady	62	73	49	44
St. John of Rochester	58	64	60	54
St. Joseph	57	60	61	50
Church of the Resurrection	52	54	53	52
Pen,E Roch,Fair,Per Total	58	65	59	51

Number of Masses



Parish	2000	2001	2002	2003
St. Jerome's	3	3	3	3
Assumption of Our Lady	5	4	4	4
St. John of Rochester	5	5	5	5
St. Joseph	5	5	5	5
Church of the Resurrection	3	3	3	3
Pen,E Roch,Fair,Per Total	21	20	20	20

Change in Ave Weekend Attendance (2000=100)



Parish	2000	2001	2002	2003
St. Jerome's	100	108	101	88
Assumption of Our Lady	100	94	88	83
St. John of Rochester	100	110	104	94
St. Joseph	100	105	101	77
Church of the Resurrection	100	104	96	94
Pen,E Roch,Fair,Per Total	100	104	98	86