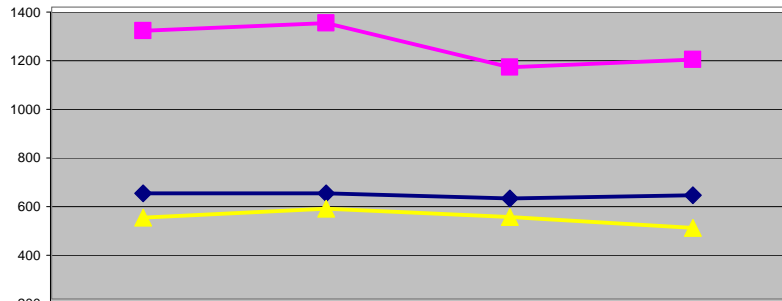


Use the expand tool to magnify the table and charts. Use the graphics selection tool to print out a chart as a full sheet.

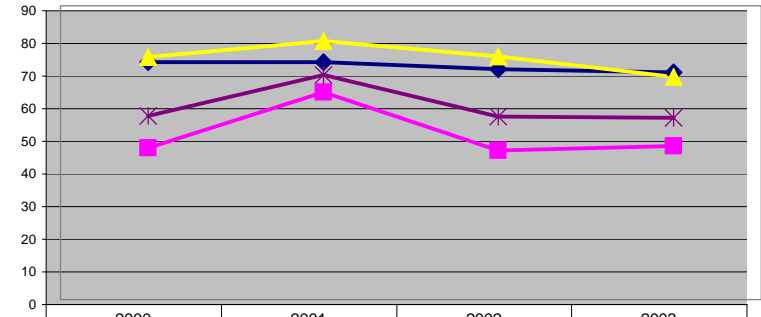
Rush-Henrietta Mass Counts

Parish	2000 # Masses	2000 Capacity	2000 Potential	2000 Ave Attend	2000 Capacity Used	2001 # Masses	2001 Capacity	2001 Potential	2001 Ave Attend	2001 Capacity Used	2002 # Masses	2002 Capacity	2002 Potential	2002 Ave Attend	2002 Capacity Used	2003 # Masses	2003 Capacity	2003 Potential	2003 Ave Attend	2003 Capacity Used
Guardian Angels	3	290	870	633	73	3	290	870	634	73	3	290	870	614	71	3	300	900	627	70
Good Shepherd	4	700	2800	1303	47	3	700	2100	1335	64	3	839	2517	1152	46	3	837	2511	1183	47
St. Joseph's	3	240	720	535	74	3	240	720	571	79	3	240	720	537	75	3	240	720	491	68
E Henrietta Rd Total	10	1230	4390	2471	56	9	1230	3690	2540	69	9	1369	4107	2303	56	9	1377	4131	2301	56

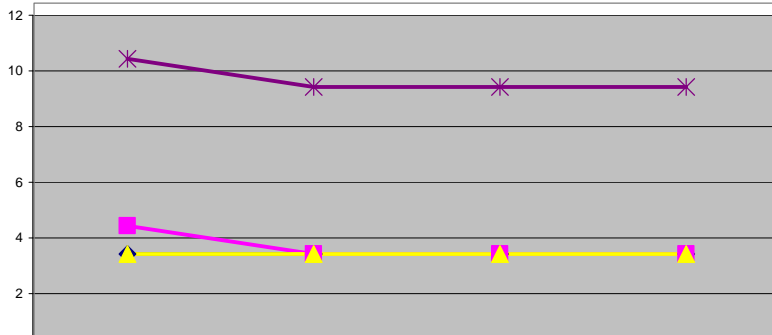
Average Weekend Mass Attendance



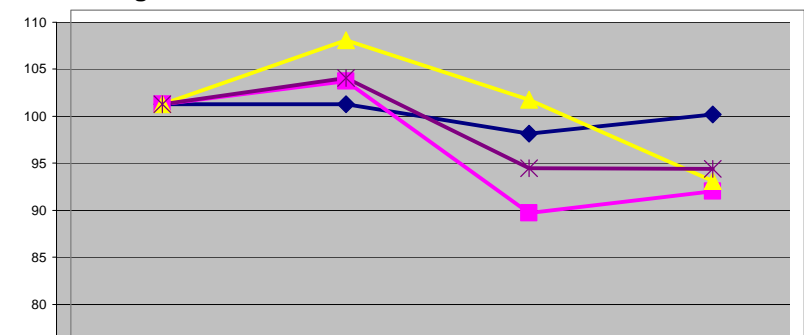
Ave Worship Capacity Used (Percent)



Number of Masses



Change in Ave Weekend Attendance (2000=100)



	2000	2001	2002	2003
Guardian Angels	3	3	3	3
Good Shepherd	4	3	3	3
St. Joseph's	3	3	3	3
E Henrietta Rd Total	10	9	9	9

	2000	2001	2002	2003
Guardian Angels	100	100	97	99
Good Shepherd	100	102	88	91
St. Joseph's	100	107	100	92
E Henrietta Rd Total	100	103	93	93