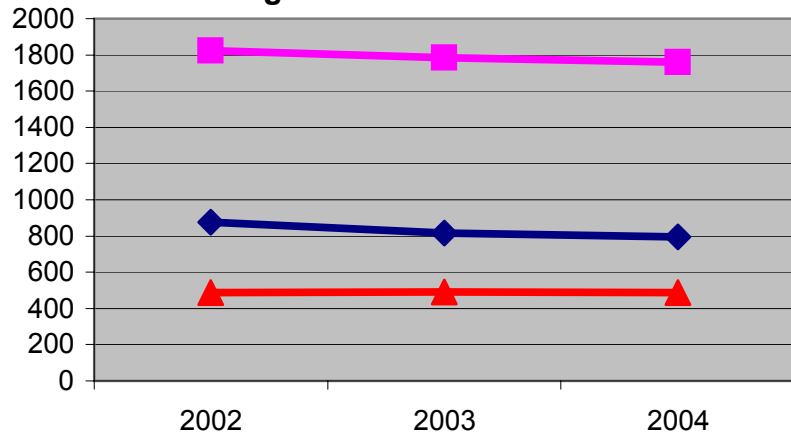


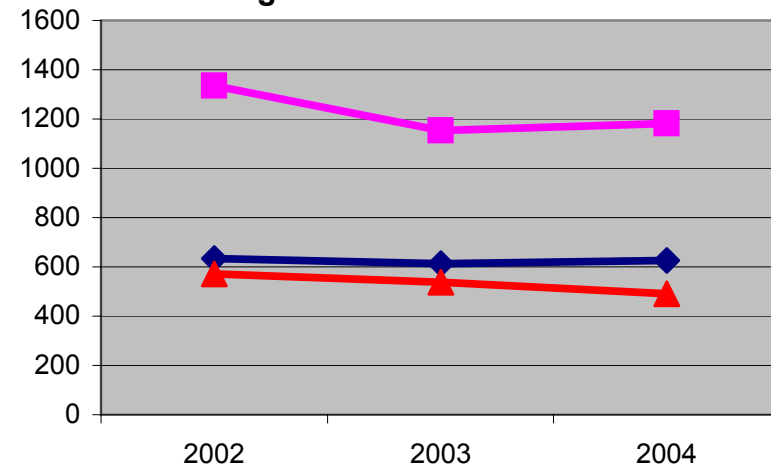
Parish	2002	2003	2004
Guardian Angels			
Households	878	816	796
Attendance	634	614	626
Baptisms	33	26	33
Deaths	15	14	23
Weddings	3	5	4
Surplus/Deficit	34	17	-78
Good Shepherd			
Households	1824	1786	1760
Attendance	1335	1152	1183
Baptisms	90	51	84
Deaths	45	32	36
Weddings	15	16	10
Surplus/Deficit	-5	2	76
St. Joseph			
Households	489	492	486
Attendance	571	537	491
Baptisms	28	26	25
Deaths	7	7	11
Weddings	2	4	3
Surplus/Deficit	26	-1	39
Rush Henrietta			
Households	3191	3094	3042
Attendance	2540	2303	2300
Baptisms	151	103	142
Deaths	67	53	70
Weddings	20	25	17
Surplus/Deficit	55	18	37

Registered Households



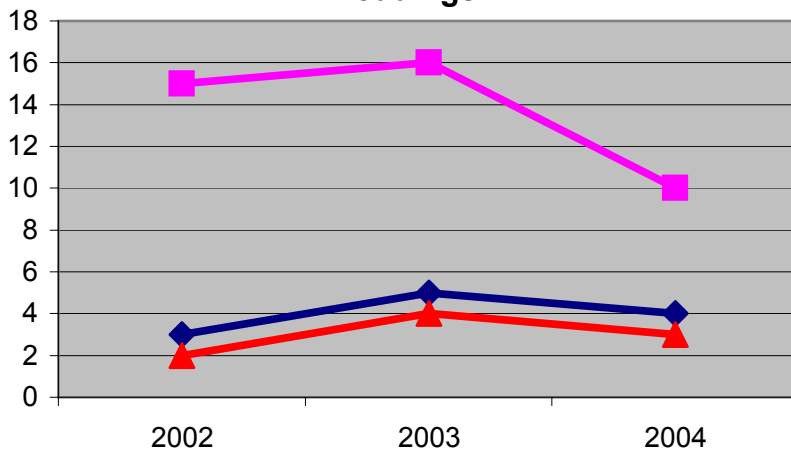
Guardian Angels Good Shepherd St. Joseph

Average Weekend Attendance



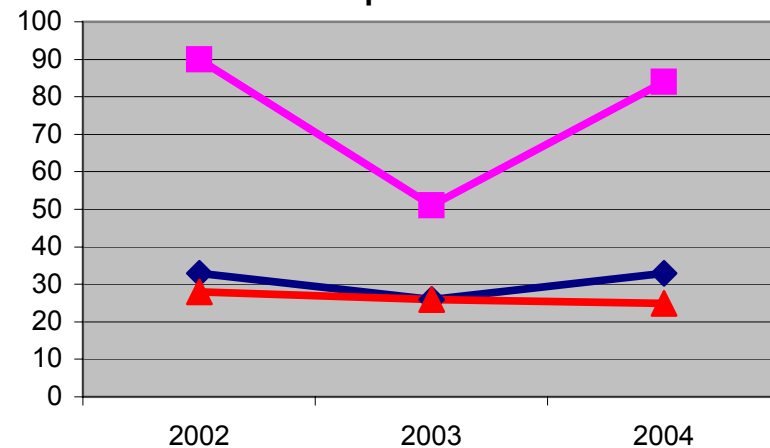
Guardian Angels Good Shepherd St. Joseph

Weddings



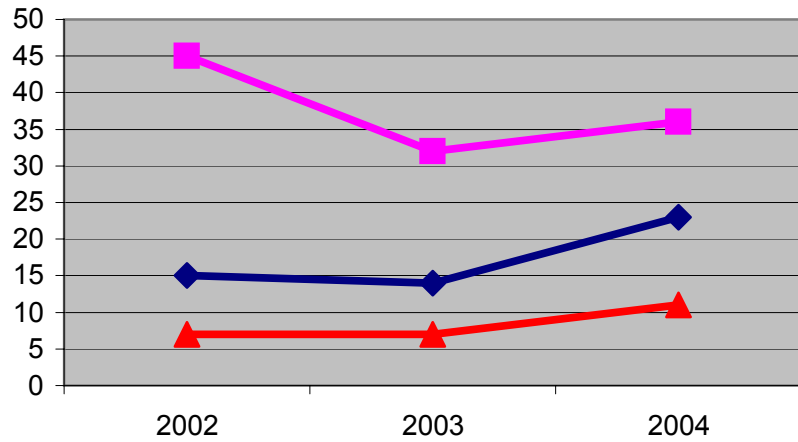
Guardian Angels Good Shepherd
St. Joseph

Baptisms



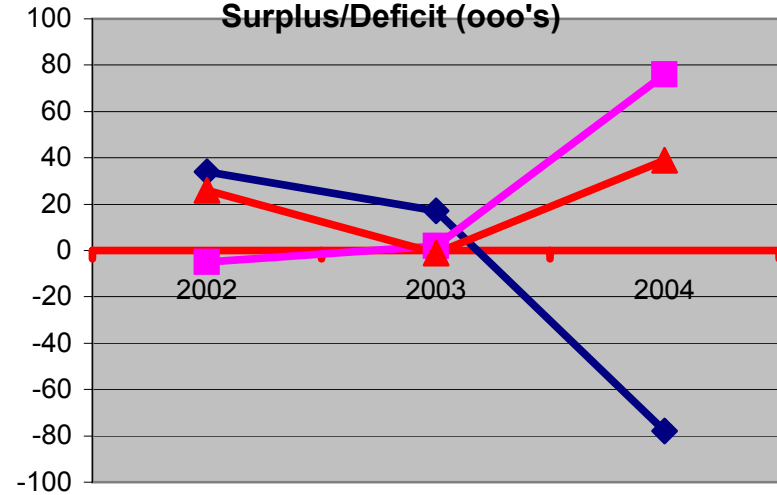
Guardian Angels Good Shepherd
St. Joseph

Deaths



Guardian Angels Good Shepherd St. Joseph

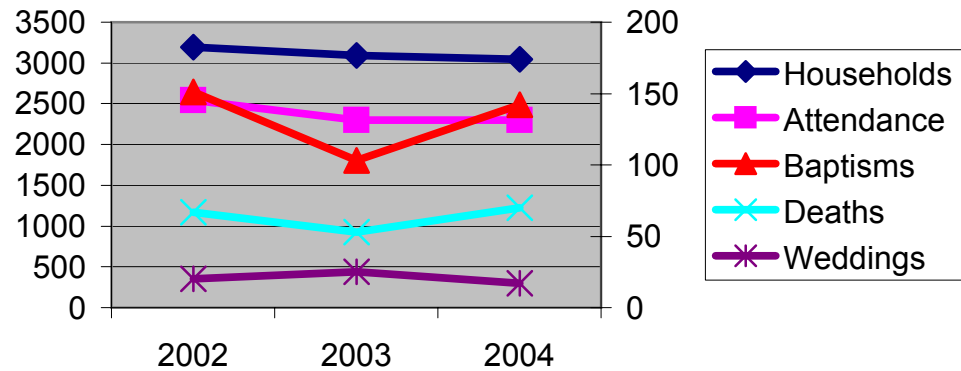
Surplus/Deficit (ooo's)



Guardian Angels Good Shepherd St. Joseph

Rush-Henrietta Planning Group

(NOTE: two different scales)



NOTE

Surplus/deficit includes unrealized gains and losses in investments