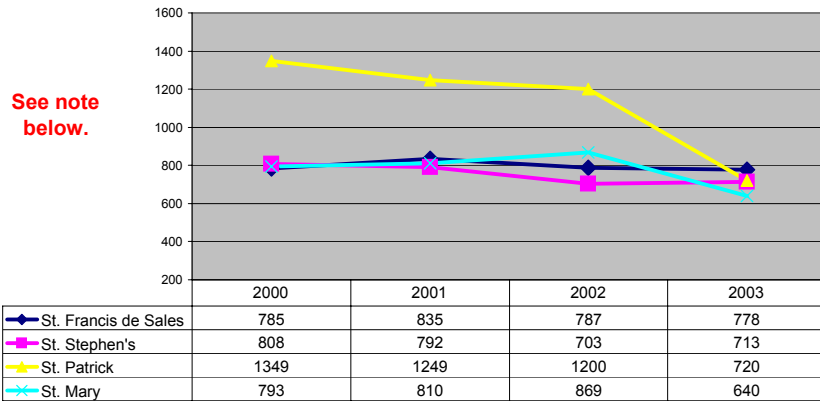


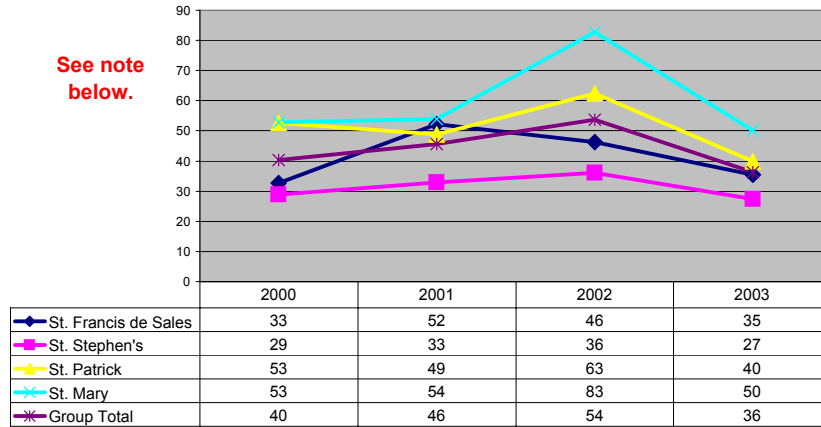
## Geneva/Waterloo/Seneca Falls Mass Counts

Parish	2000 # Masses	2000 Capacity	2000 Potential	2000 Ave Attend	2000 Capacity Used	2001 # Masses	2001 Capacity	2001 Potential	2001 Ave Attend	2001 Capacity Used	2002 # Masses	2002 Capacity	2002 Potential	2002 Ave Attend	2002 Capacity Used	2003 # Masses	2003 Capacity	2003 Potential	2003 Ave Attend	2003 Capacity Used
St. Francis de Sales	4	600	2400	785	33	4	400	1600	835	52	4	425	1700	787	46	4	550	2200	778	35
St. Stephen's	4	700	2800	808	29	4	600	2400	792	33	3	650	1950	703	36	4	650	2600	713	27
St. Patrick	4	640	2560	1349	53	4	640	2560	1249	49	3	640	1920	1200	63	3	600	1800	720	40
St. Mary	4	375	1500	793	53	4	375	1500	810	54	3	350	1050	869	83	3	425	1275	640	50
Group Total	16	2315	9260	3734	40	16	2015	8060	3685	46	13	2065	6620	3559	54	14	2225	7875	2851	36

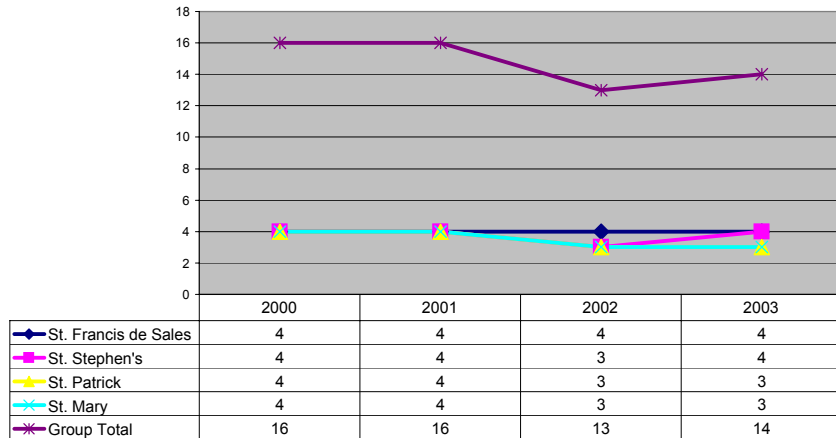
### Average Weekend Mass Attendance



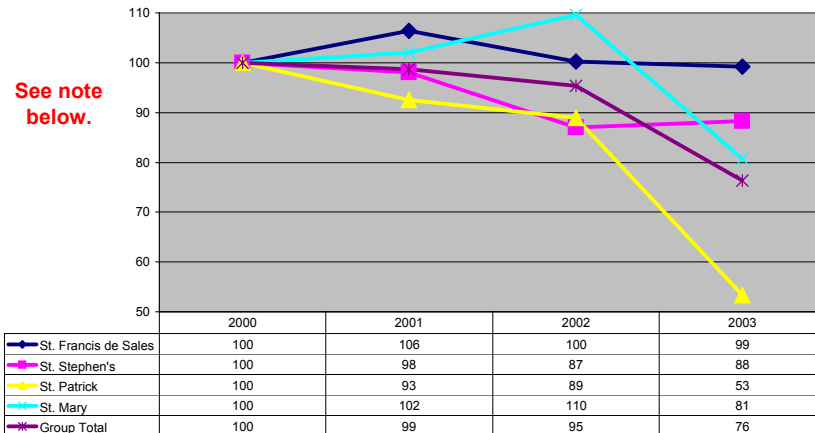
### Ave Worship Capacity Used (Percent)



### Number of Masses



### Change in Ave Weekend Attendance (2000=100)



Mass attendance information for St. Patrick's appears to have been estimated for 2000, 2001, and 2002. These appear to have been overestimates. While attendance has declined at St. Patrick's, it has not been as precipitous as the charts suggest.