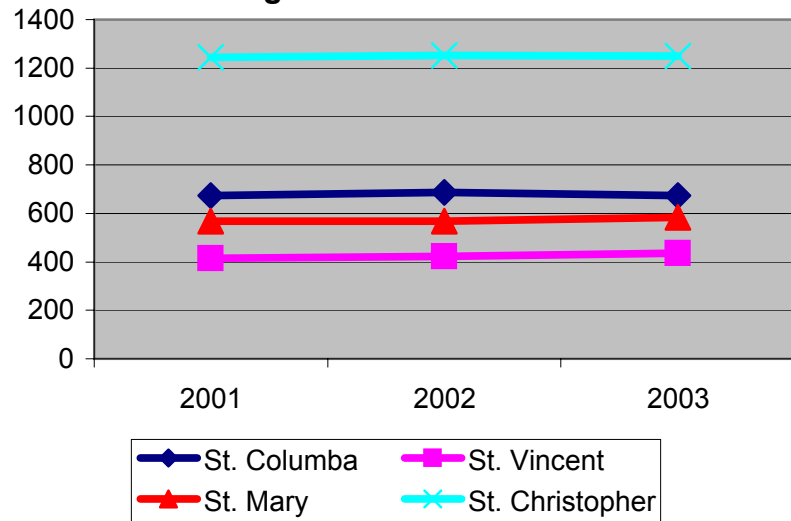
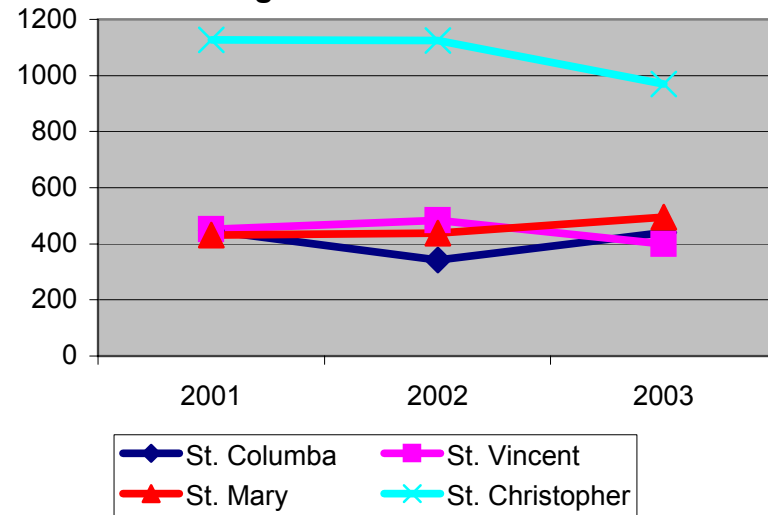


Parish	2001	2002	2003
St. Columba			
Households	674	686	674
Attendance	448	342	440
Baptisms	27	31	20
Deaths	9	10	6
Weddings	5	7	12
Surplus/Deficit	5	-15	-21
St. Vincent			
Households	416	422	436
Attendance	452	483	400
Baptisms	21	24	21
Deaths	12	9	16
Weddings	9	3	1
Surplus/Deficit	-43	-31	138
St. Mary			
Households	569	569	584
Attendance	431	438	494
Baptisms	26		27
Deaths	10		15
Weddings	10		2
Surplus/Deficit	-26	-20	-51
St. Christopher			
Households	1243	1253	1249
Attendance	1126	1125	970
Baptisms	35	4	39
Deaths	13	13	21
Weddings	7	3	2
Surplus/Deficit	-2	-51	-73
Five Saints West			
Households	2902	2930	2943
Attendance	2457	2388	2304
Baptisms	109	59	107
Deaths	44	32	58
Weddings	31	13	17
Surplus/Deficit	-66	-117	-7

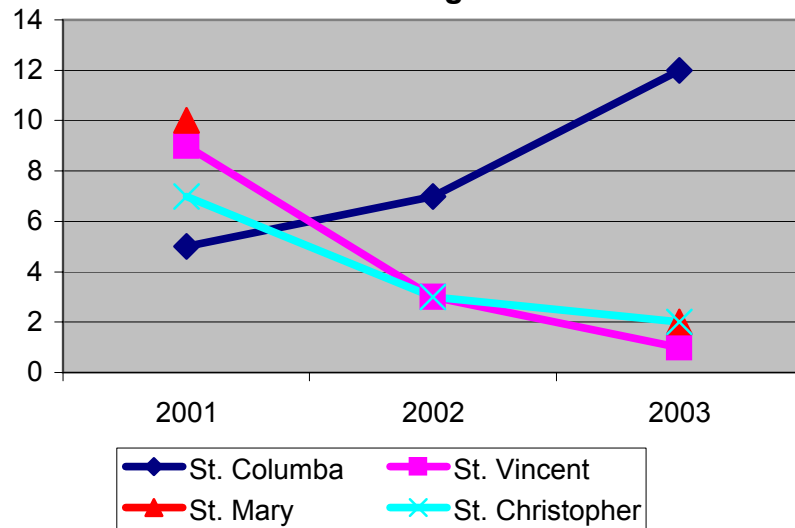
Registered Households



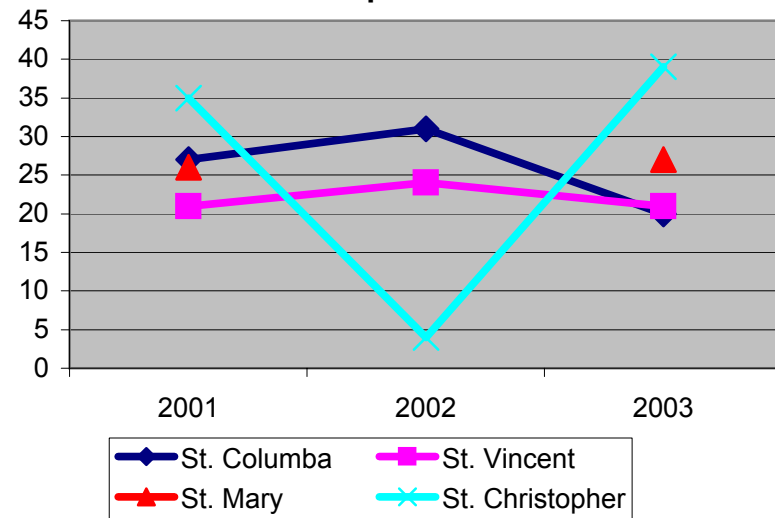
Average Weekend Attendance



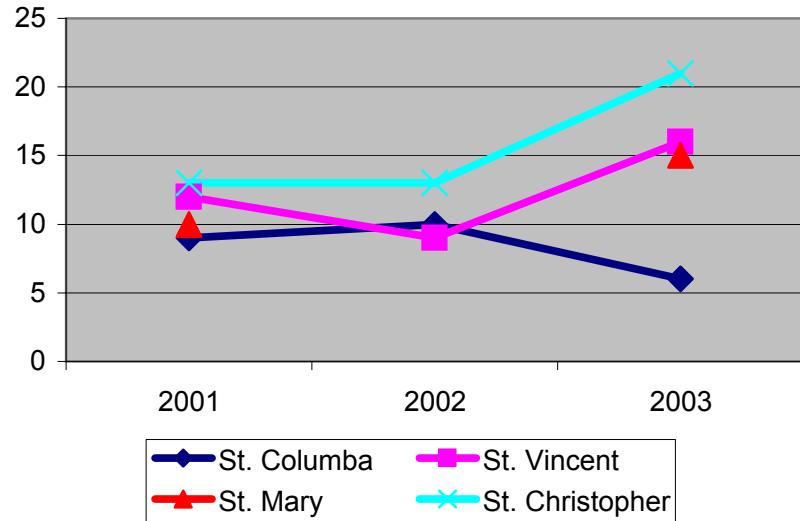
Weddings



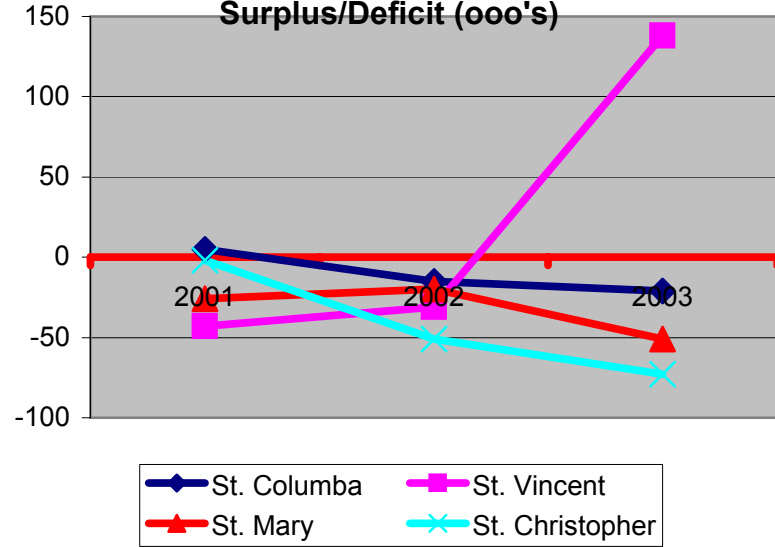
Baptisms



Deaths



Surplus/Deficit (ooo's)



Monroe-Clinton Planning Group

(NOTE: two different scales)

