

Common Parish Activities to Enhance Stewardship

Chuck Zech

**Villanova University
Center for the Study of Church
Management**

TABLE 1

PARISH STEWARDSHIP OUTCOMES

<u>Outcome</u>	<u>Mean Value</u>
I. Treasure – per household regular contributions	\$517
II. Percent of Parishioners Volunteering Time	27.4
III. Parish Spirituality Index – Sum of the Percent of parishioners engaged in the following activities	46.3
– Regularly attend weekday Mass	
– Regularly attend other liturgical celebrations (e.g., adoration, rosary)	
– Regularly attend bible study groups	
– Regularly attend small group retreats	
– Member of small faith group	

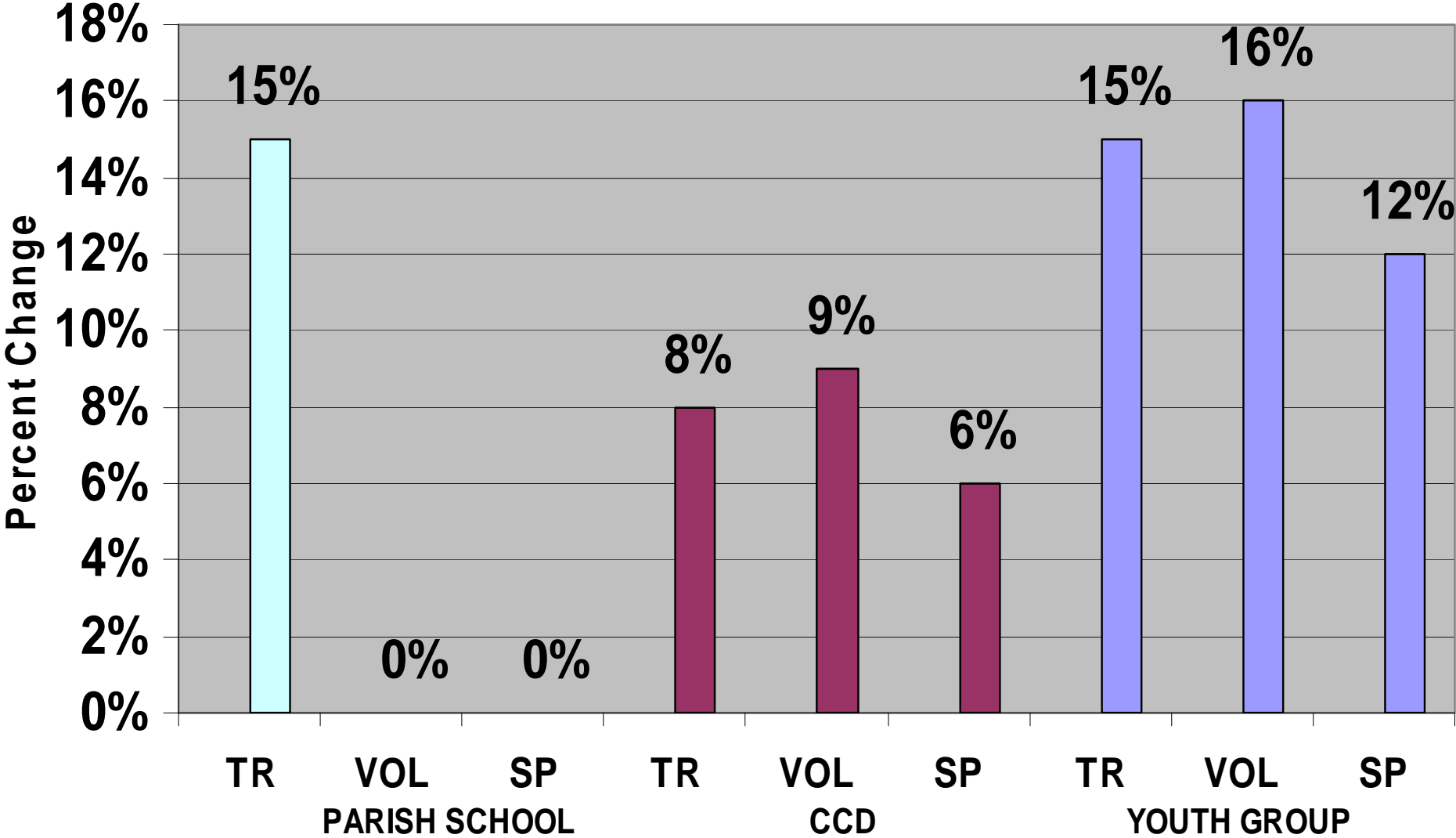
1. In which of the following youth programs is teaching about stewardship most effective?

a. Parochial school

b. Religious education/CCD

c. Youth group

Figure 7: Stewardship Most Effective in Youth Program



2. In which of the following adult programs is teaching about stewardship most effective?

a. Adult education

b. Senior citizen group

c. Spiritual renewal

Figure 8: Stewardship Most Effective in Adult Program

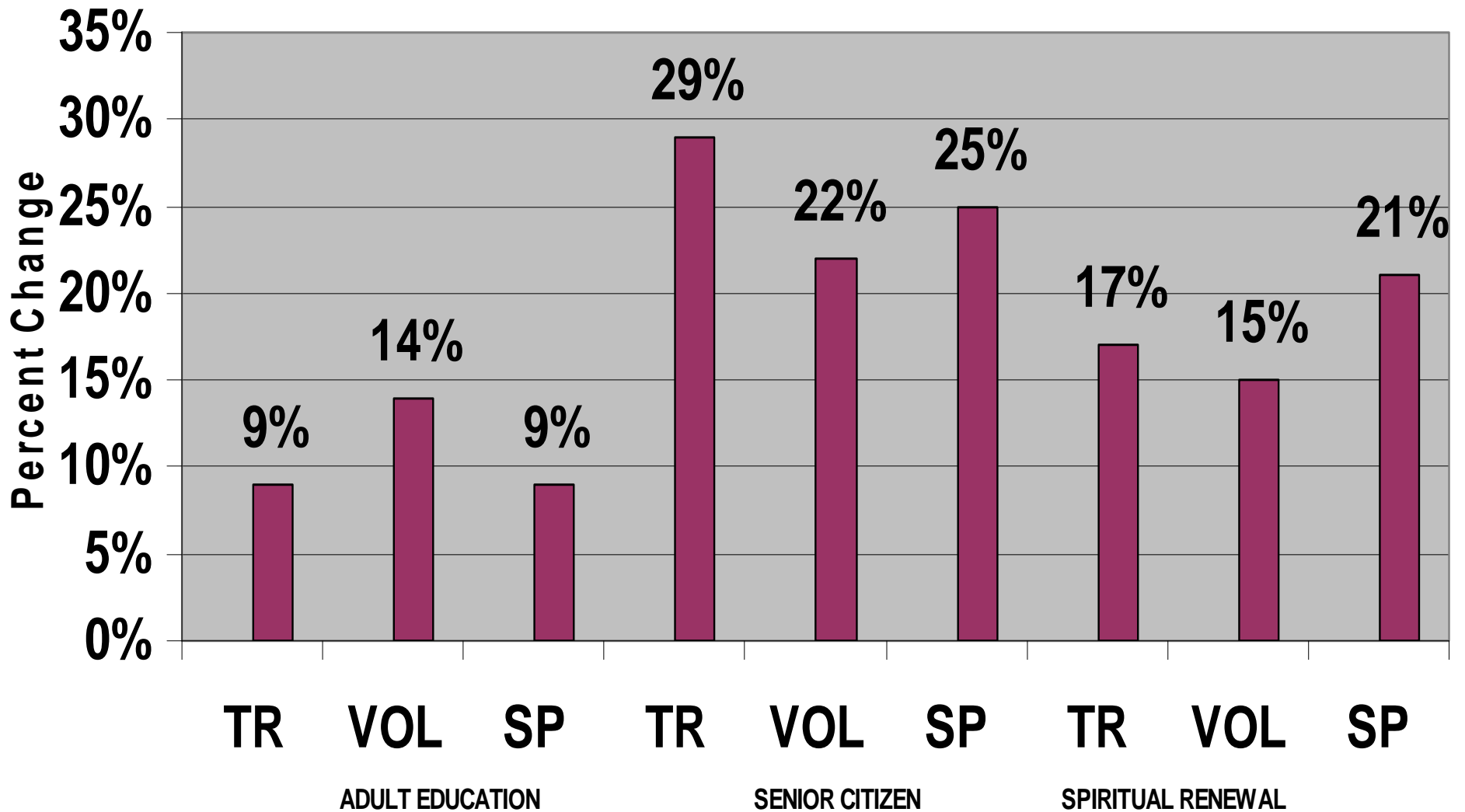
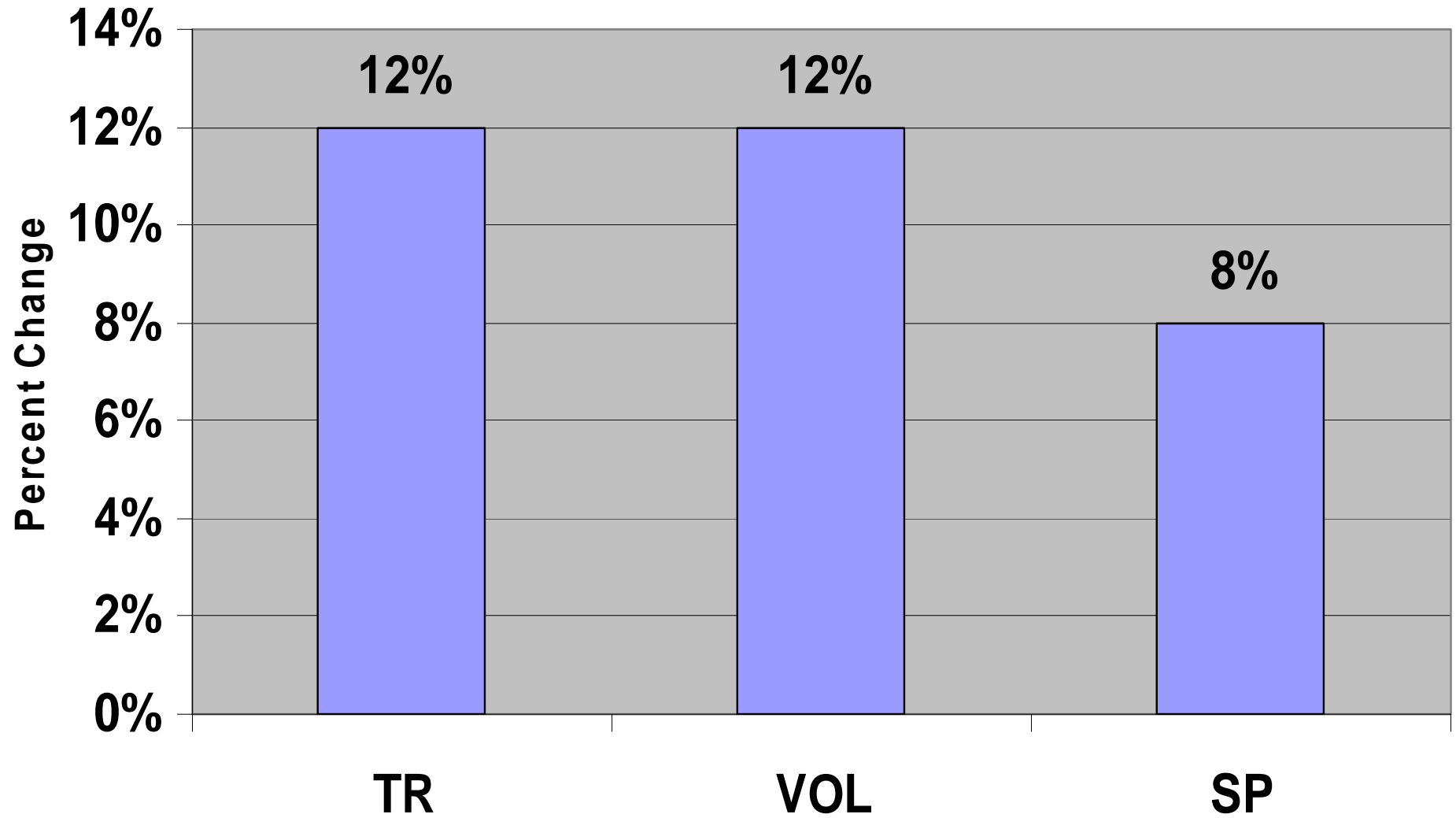


Figure 8a: Three or More Stewardship Education/Formation Programs



3. Which of the following welcoming activities is most effective at building parish stewardship?

a. Greeters at Mass

b. Welcome wagon – visit new parishioners

c. New members reception

Figure 9: Most Effective Welcoming Activity

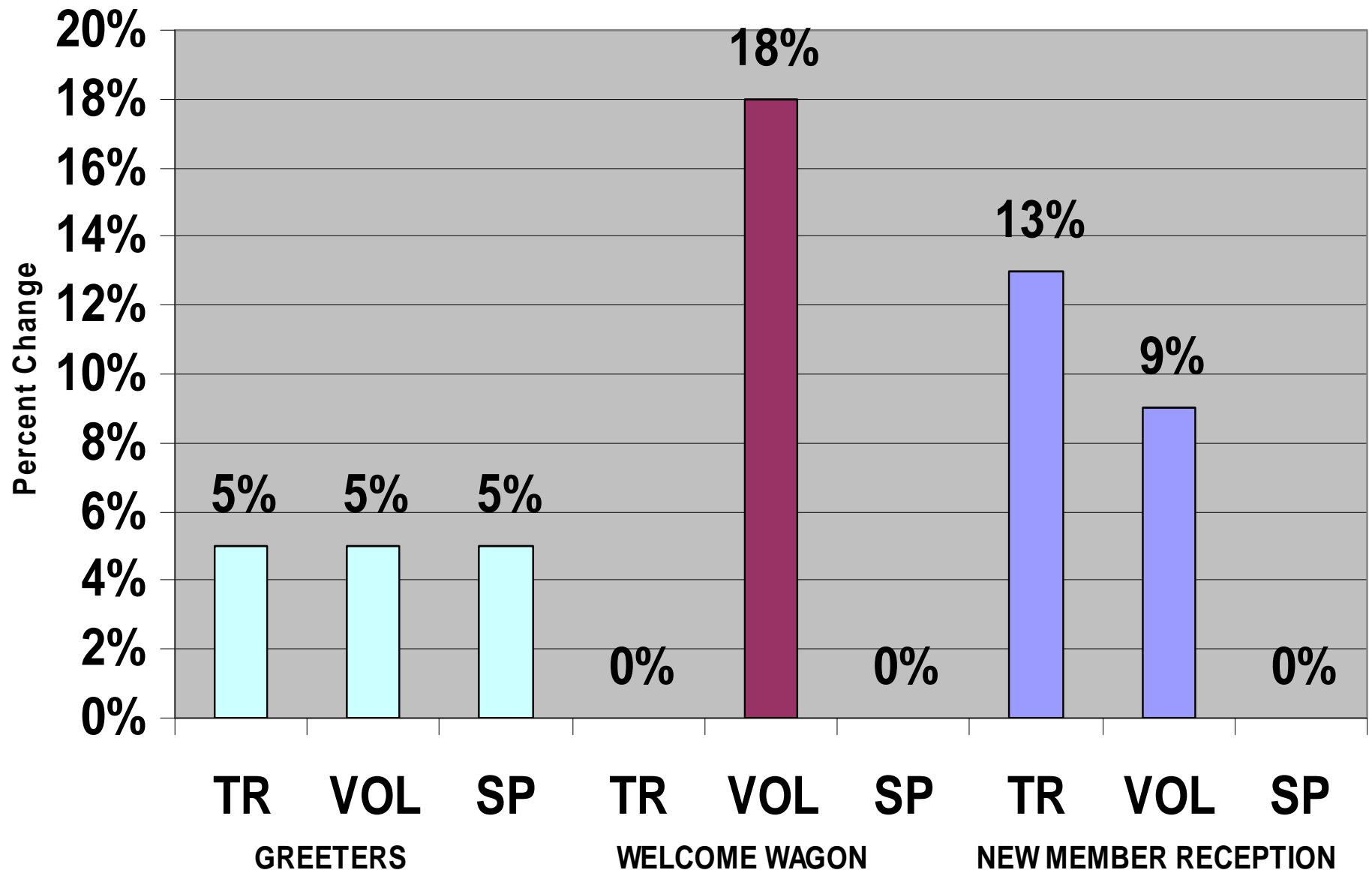
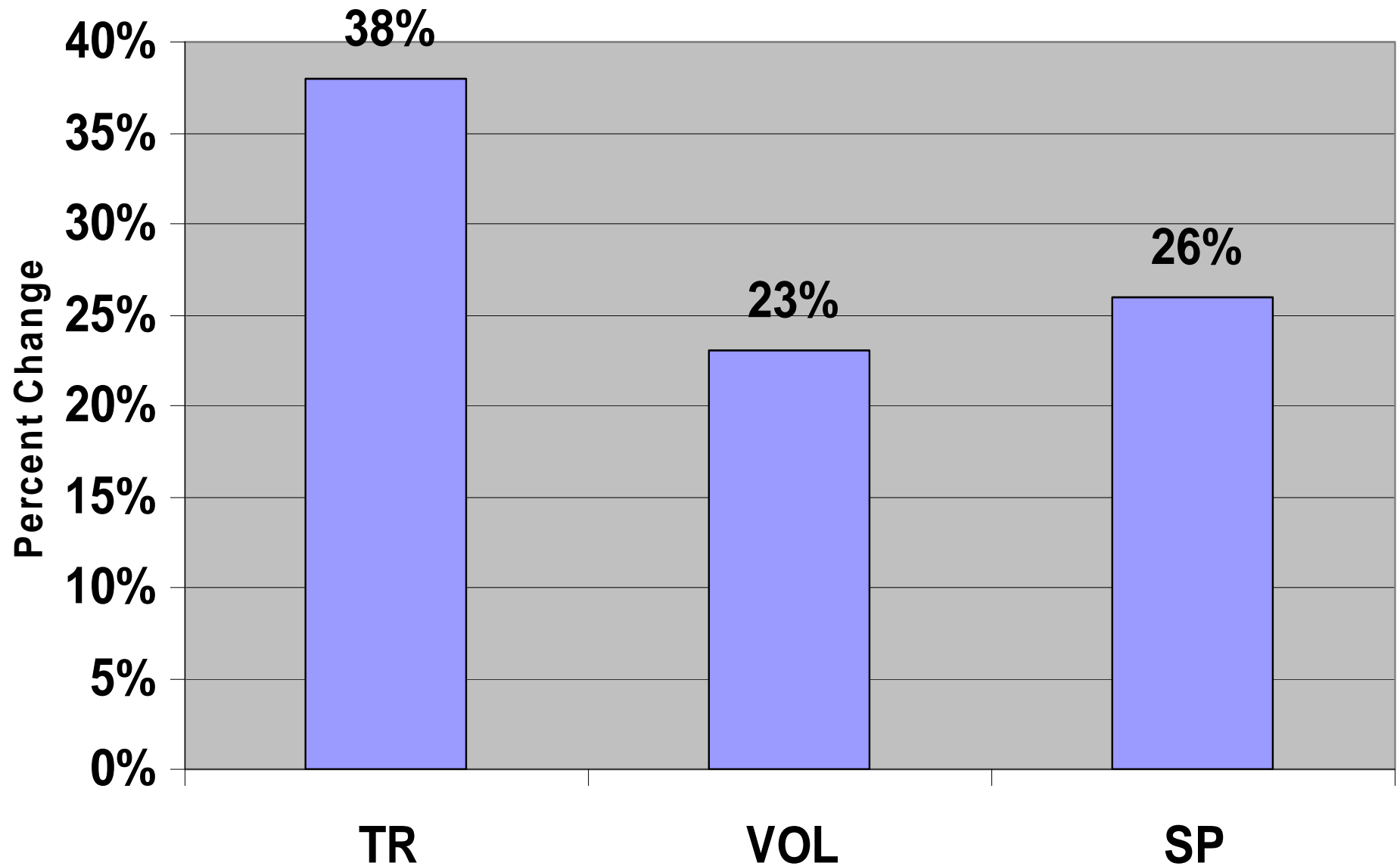


Figure 9a: Four or More Welcoming Activities



4. Which of the following community building activities is most effective at building parish stewardship?

- a. Coffee/donuts after Mass
- b. Parish picnic
- c. Bingo

Figure 10: Most Effective Community Building Activity

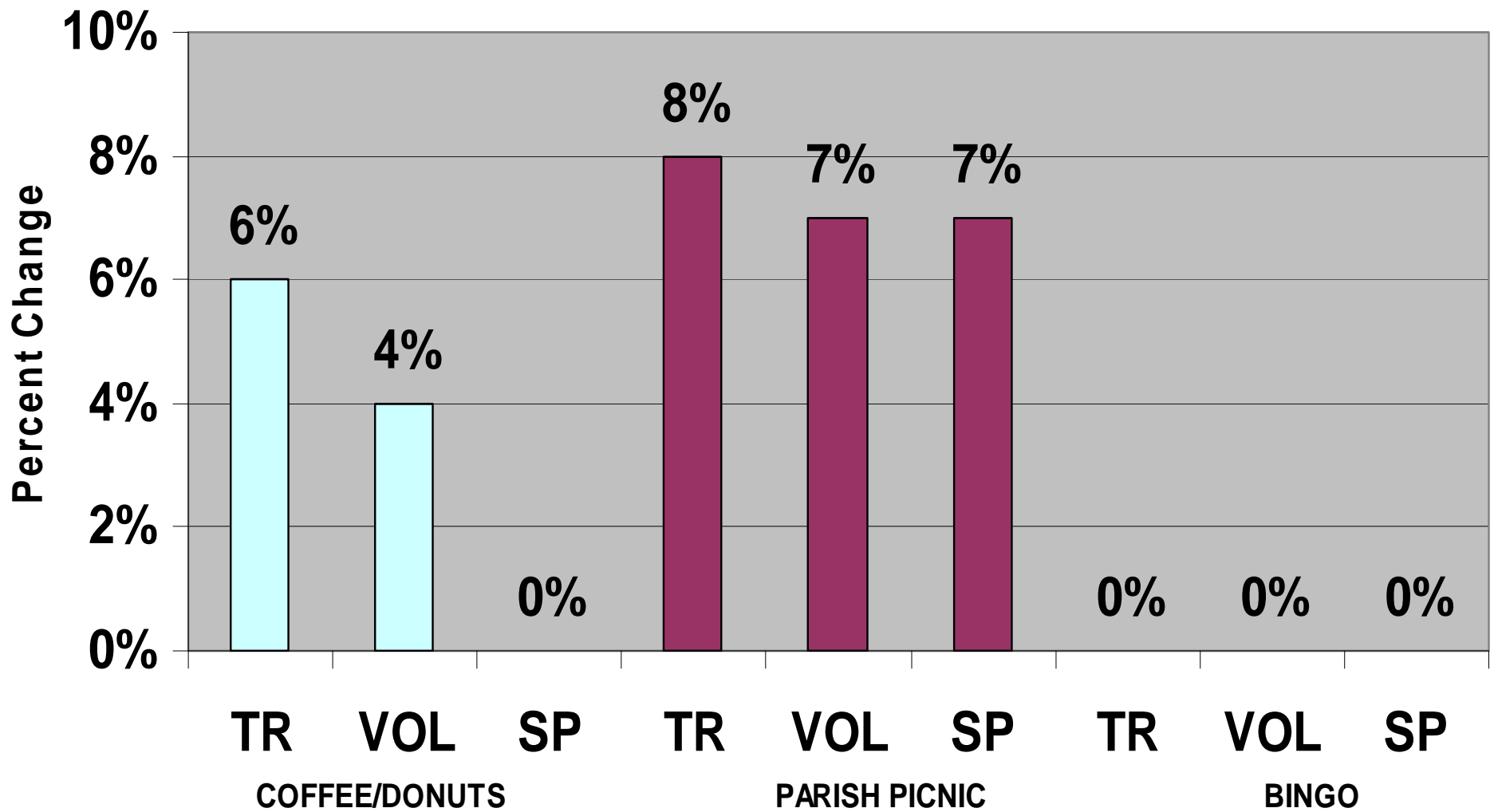
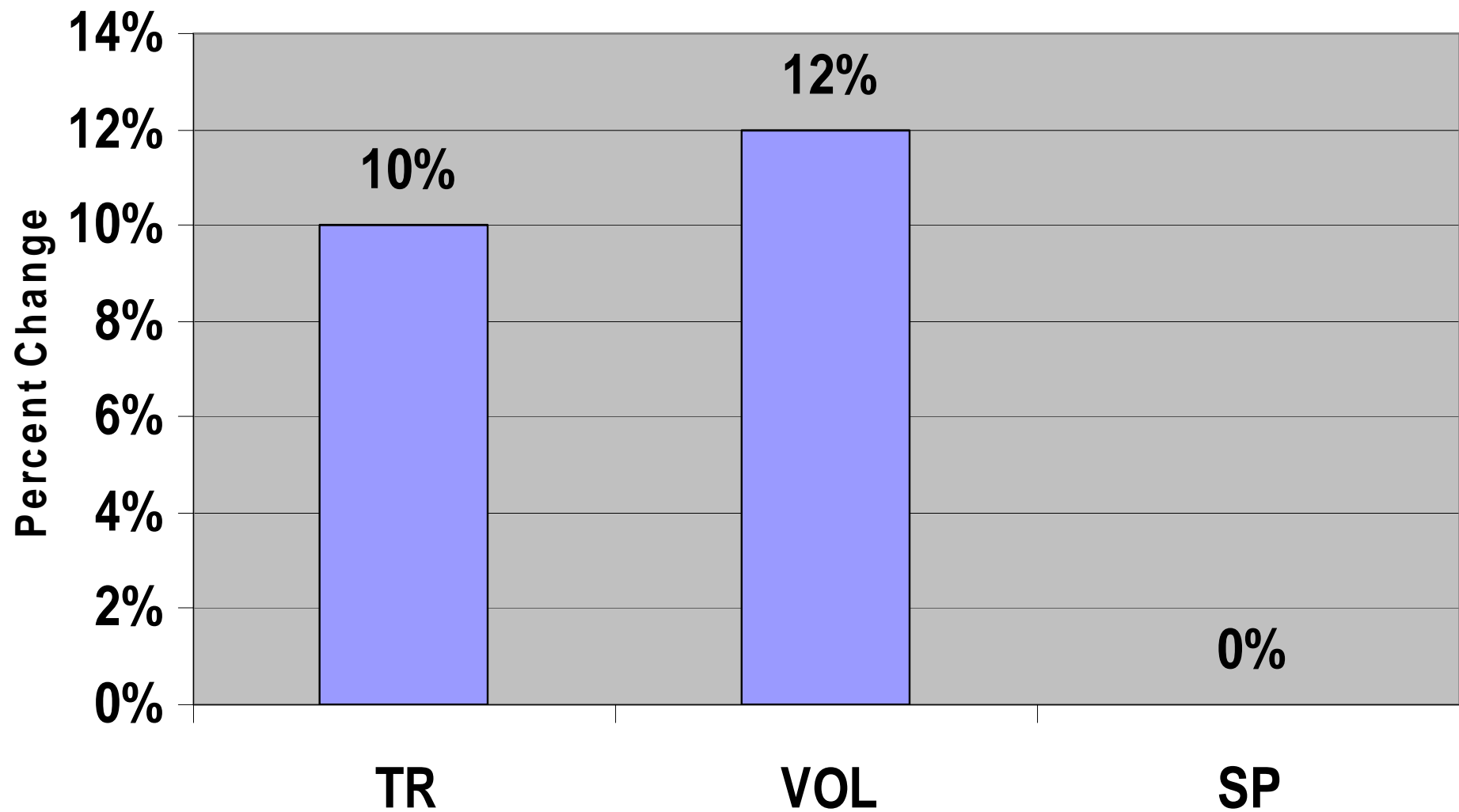


Figure 10a: Four or More Community Building Activities



5. Which of the following parish communications tools is most effective at building parish stewardship?

- a. Parish bulletin
- b. Parish newsletter
- c. Parish website

Figure 11: Most Effective Communication Tool

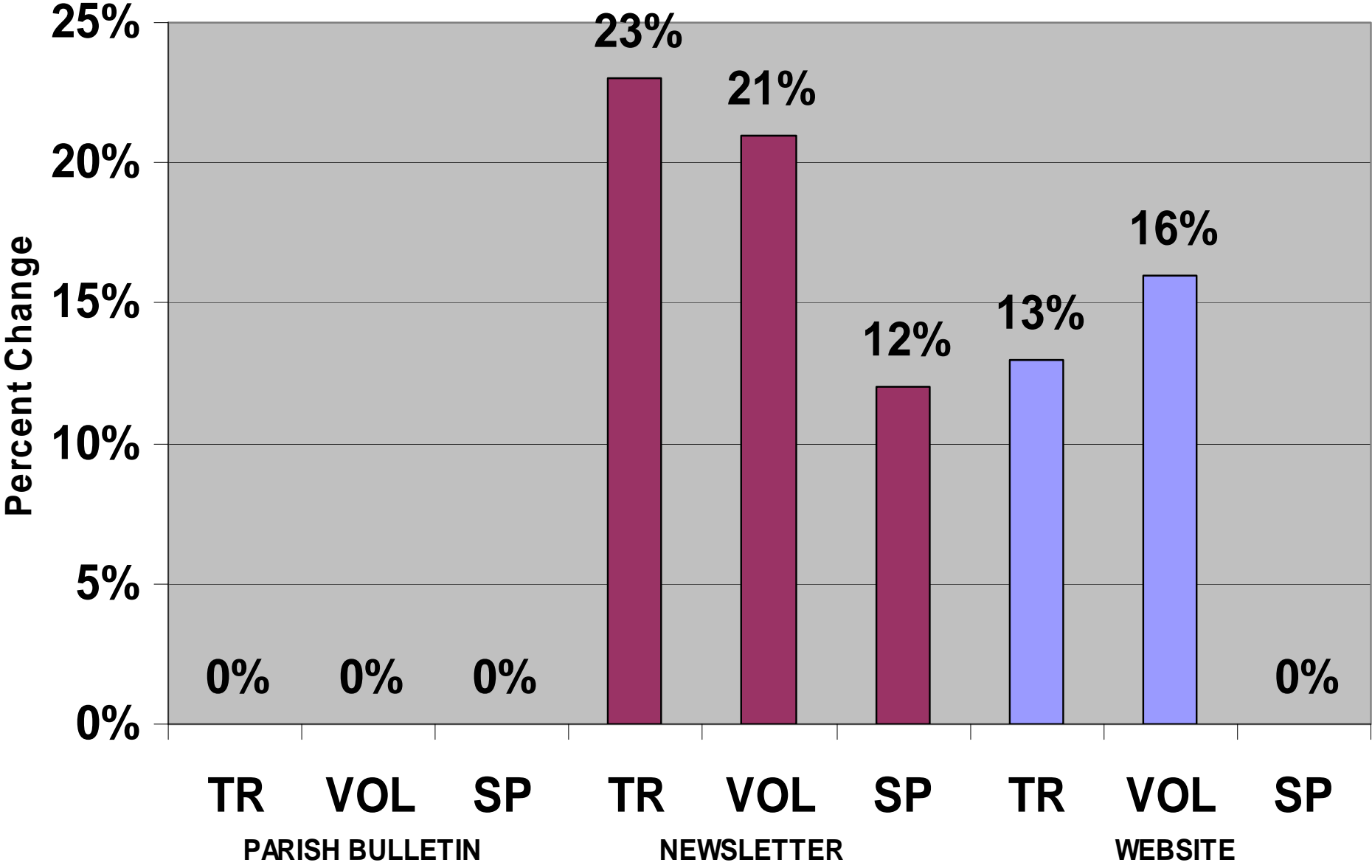
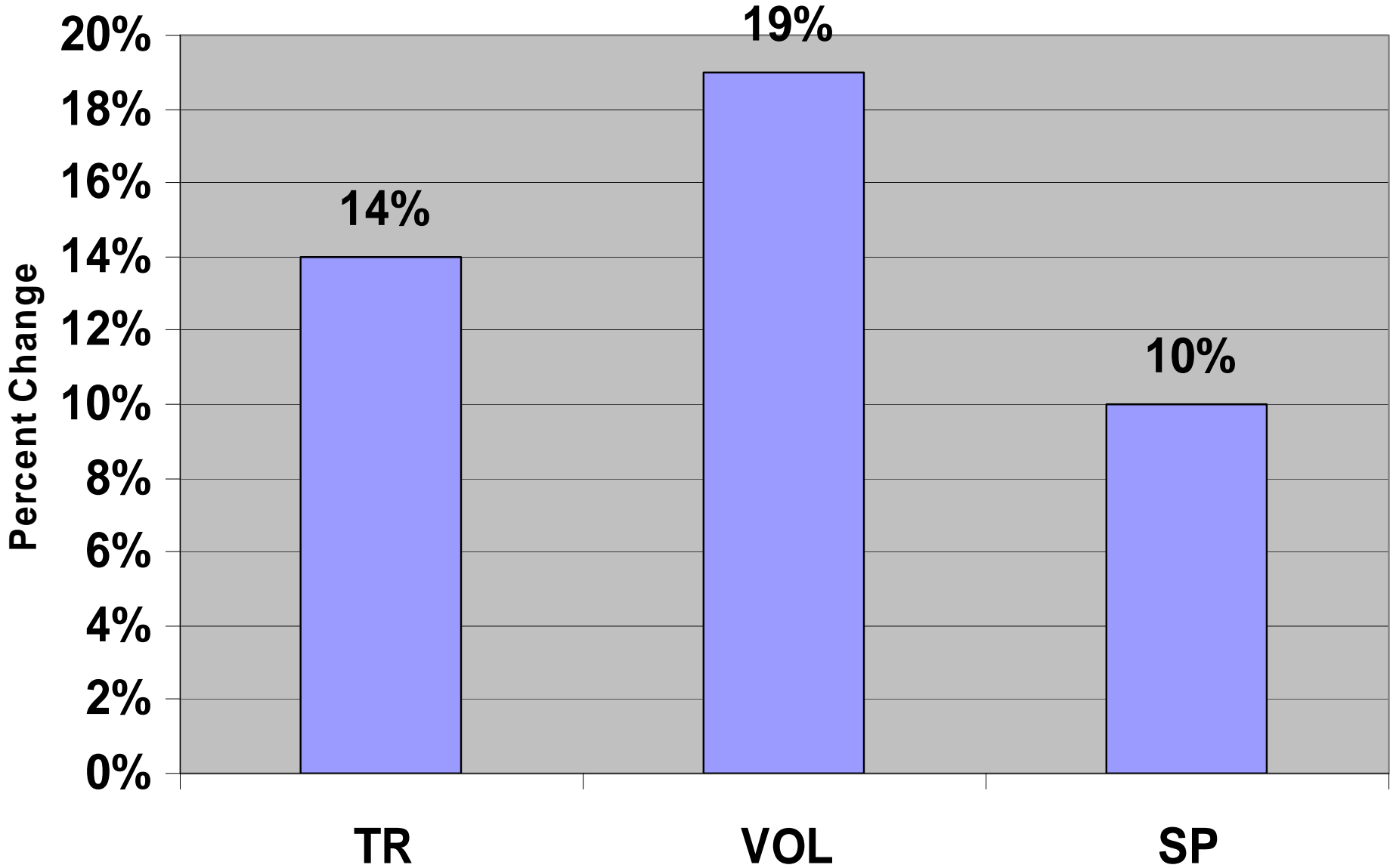
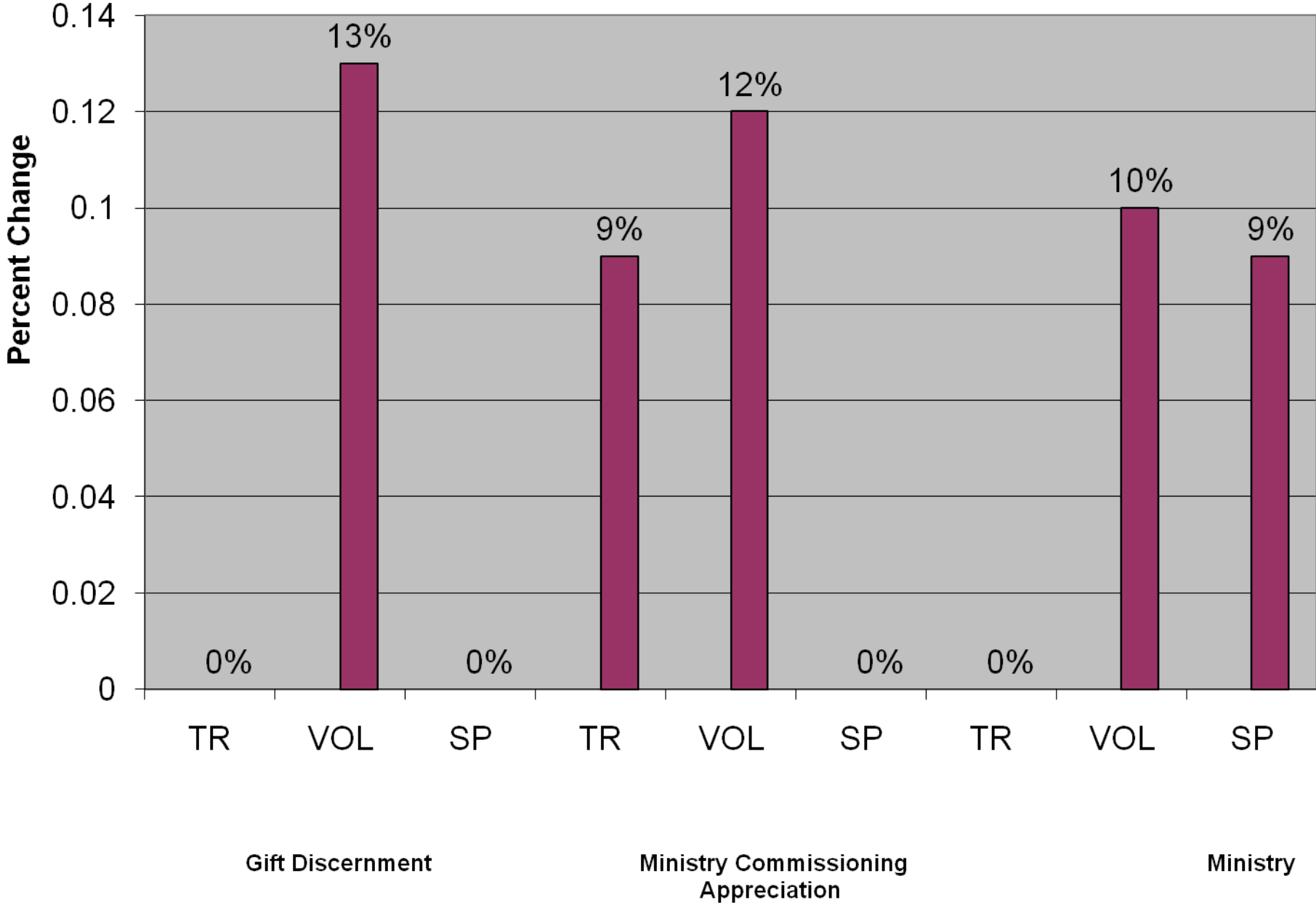


Figure 11a: Five or More Communications Media



Parish Support of Time and Talent



Conclusion: Eight Activities to Advance Parish Stewardship

- 1. Be a welcoming parish that takes community-building seriously**
- 2. Emphasize stewardship in all parish formation and education programs**
- 3. Communicate with parishioners on stewardship**
- 4. Good stewardship starts in the parish house**