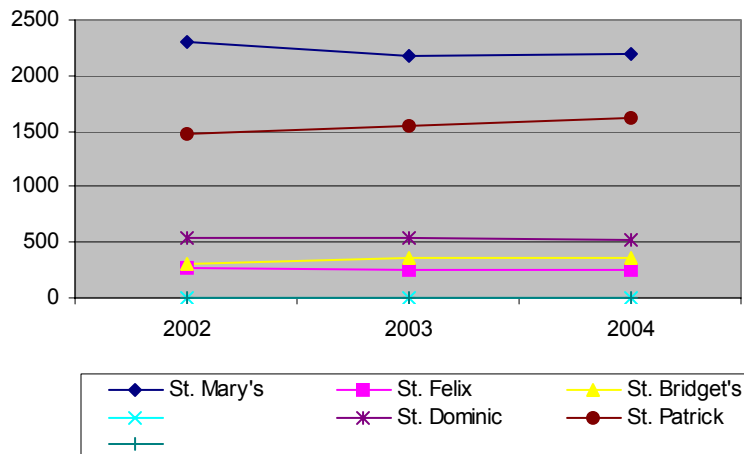


PARISH PLANNING REPORT  
 PLANNING GROUP TREND ANALYSIS  
 Northwestern Ontario County

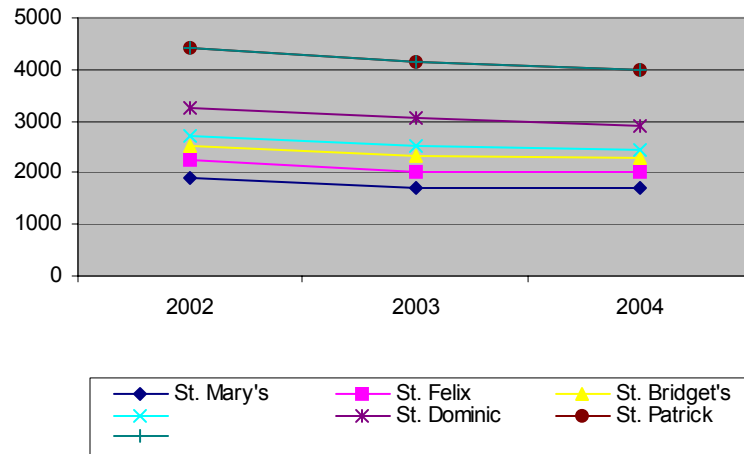
Parish	2002	2003	2004
<b>St. Mary's</b>			
Households	2298	2168	2200
Attendance	1885	1699.25	1721
Baptisms	96	101	90
Deaths	58	73	69
Weddings	47	29	16
<b>St. Felix</b>			
Households	263	254	244
Attendance	344.5	335.5	283
Baptisms	8	8	12
Deaths	9	11	10
Weddings	0	2	0
<b>St. Bridget's</b>			
Households	297	355	360
Attendance	280.25	293.5	279.5
Baptisms	16	13	13
Deaths	10	6	16
Weddings	2	3	3
<b>St. Dominic</b>			
Households	546	532	525
Attendance	527.75	537.5	474
Baptisms	20	15	14
Deaths	27	23	15
Weddings	3	4	4
<b>St. Patrick</b>			
Households	1476	1551	1624
Attendance	1160	1115	1071.25
Baptisms	70	72	83
Deaths	38	32	26
Weddings	12	10	15

<b>Northwestern Ontario County</b>			
Households	4880	4860	4953
Attendance	4406	4161.75	3978.75
Baptisms	210	209	212
Deaths	142	145	136
Weddings	64	48	38

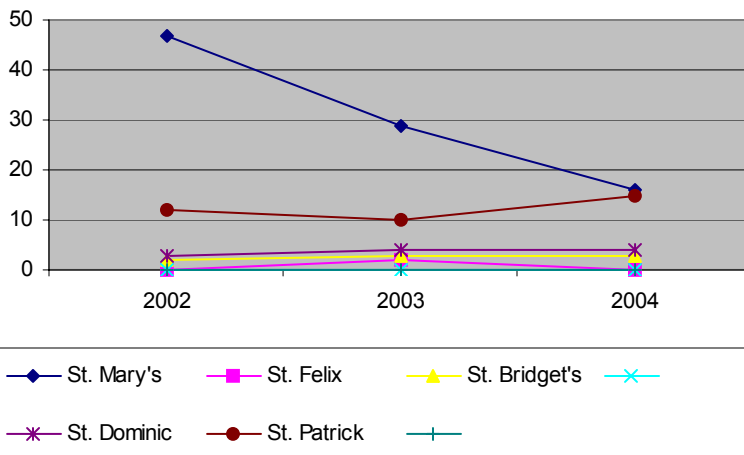
### Registered Households



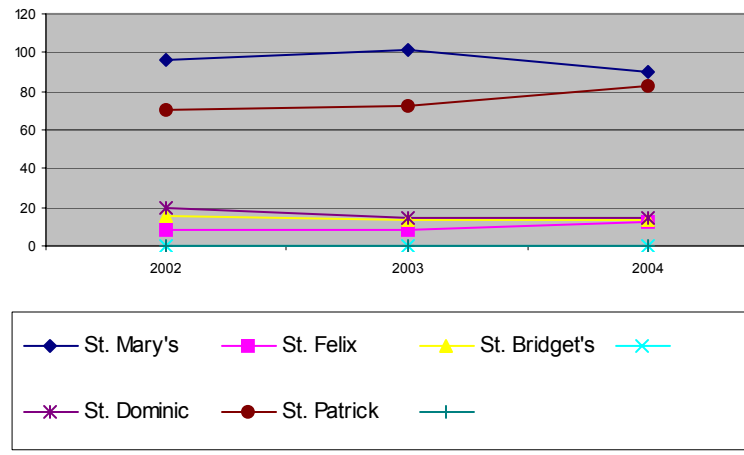
### Ave. Weekly Attendance



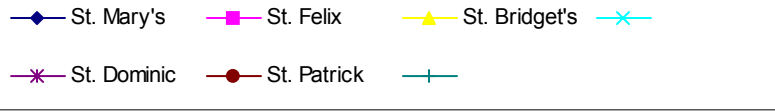
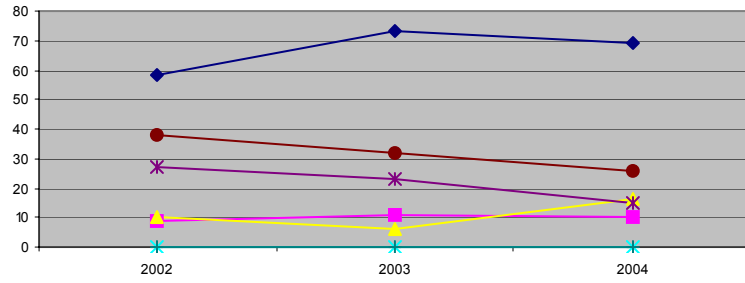
### Weddings



### Baptisms



### Deaths



### Planning Group

(NOTE: two different scales)

