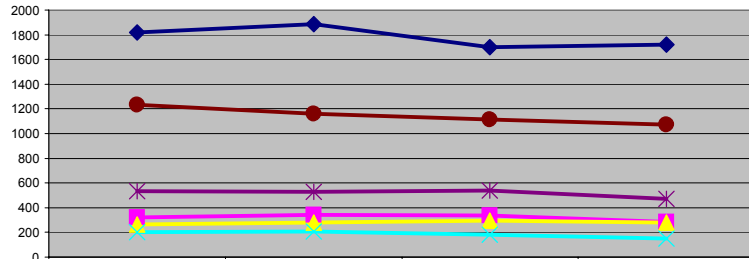


Use the expand tool to enlarge the table and charts. Use the graphics selection tool to print out one chart as a full sheet.

Northwest Ontario Mass Counts

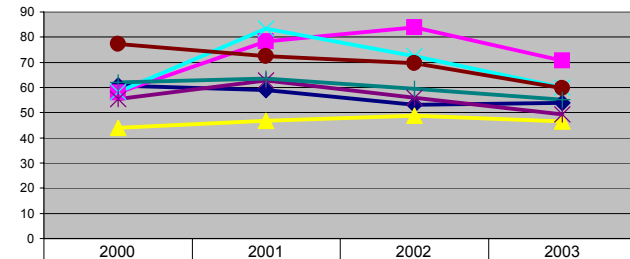
Parish	2000 # Masses	2000 Capacity	2000 Potential	2000 Ave Attend	2000 Capacity Used	2001 # Masses	2001 Capacity	2001 Potential	2001 Ave Attend	2001 Capacity Used	2002 # Masses	2002 Capacity	2002 Potential	2002 Ave Attend	2002 Capacity Used	2003 # Masses	2003 Capacity	2003 Potential	2003 Ave Attend	2003 Capacity Used
St. Mary's	4	750	3000	1821	61	4	800	3200	1885	59	4	800	3200	1699	53	4	800	3200	1721	54
St. Felix	2	275	550	319	58	2	220	440	345	78	2	200	400	336	84	2	200	400	283	71
St. Bridget's	2	300	600	264	44	2	300	600	280	47	2	300	600	294	49	2	300	600	280	47
St. Francis	1	350	350	203	58	1	250	250	209	83	1	250	250	181	72	1	250	250	150	60
St. Dominic	3	320	960	532	55	3	280	840	528	63	3	320	960	538	56	3	320	960	474	49
St. Patrick	4	400	1600	1236	77	4	400	1600	1160	73	4	400	1600	1115	70	4	448	1792	1071	60
NW Ontario Total	16	2395	7060	4376	62	16	2250	6930	4406	64	16	2270	7010	4162	59	16	2318	7202	3979	55

Average Weekend Mass Attendance



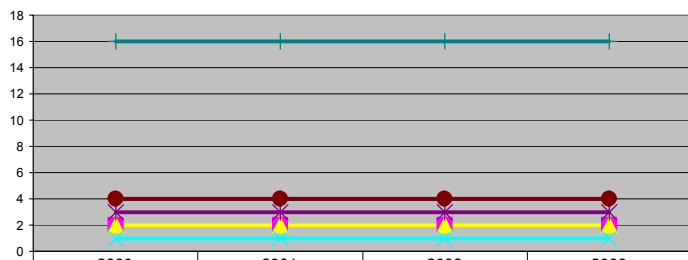
Year	2000	2001	2002	2003
St. Mary's	1821	1885	1699	1721
St. Felix	319	345	336	283
St. Bridget's	264	280	294	280
St. Francis	203	209	181	150
St. Dominic	532	528	538	474
St. Patrick	1236	1160	1115	1071

Ave Worship Capacity Used (Percent)



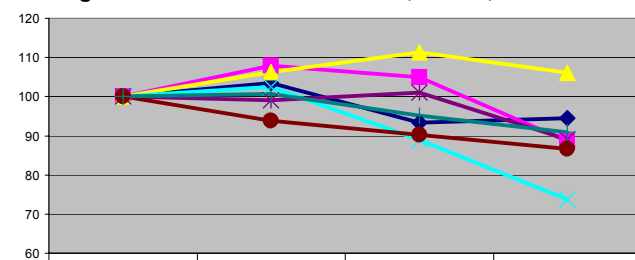
Year	2000	2001	2002	2003
St. Mary's	61	59	53	54
St. Felix	58	78	84	71
St. Bridget's	44	47	49	47
St. Francis	58	83	72	60
St. Dominic	55	63	56	49
St. Patrick	77	73	70	60
NW Ontario Total	62	64	59	55

Number of Masses



Year	2000	2001	2002	2003
St. Mary's	4	4	4	4
St. Felix	2	2	2	2
St. Bridget's	2	2	2	2
St. Francis	1	1	1	1
St. Dominic	3	3	3	3
St. Patrick	4	4	4	4
NW Ontario Total	16	16	16	16

Change in Ave Weekend Attendance (2000=100)



Year	2000	2001	2002	2003
St. Mary's	100	104	93	94
St. Felix	100	108	105	89
St. Bridget's	100	106	111	106
St. Francis	100	103	89	74
St. Dominic	100	99	101	89
St. Patrick	100	94	90	87
NW Ontario Total	100	101	95	91