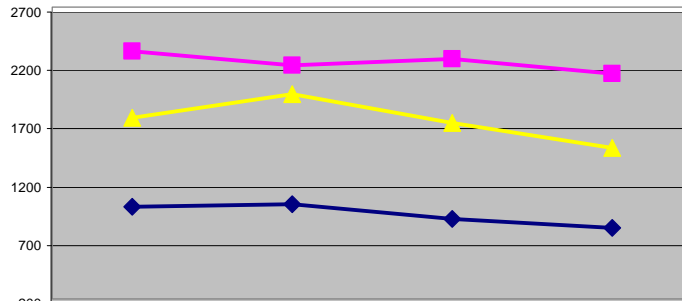


Use the expand tool to magnify the table and charts. Use the graphics selection tool to print out a chart as a full sheet.

Pittsford-Mendon Mass Counts

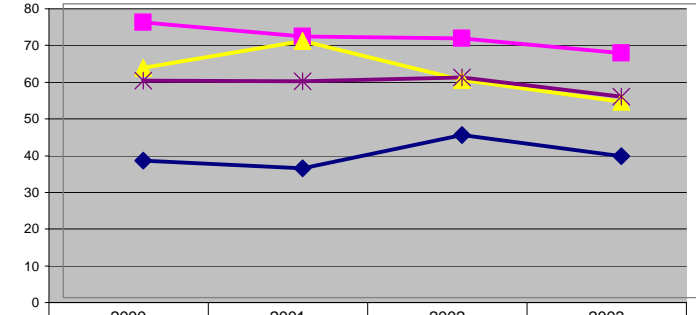
Parish	2000 # Masses	2000 Capacity	2000 Potential	2000 Ave Attend	2000 Capacity Used	2001 # Masses	2001 Capacity	2001 Potential	2001 Ave Attend	2001 Capacity Used	2002 # Masses	2002 Capacity	2002 Potential	2002 Ave Attend	2002 Capacity Used	2003 # Masses	2003 Capacity	2003 Potential	2003 Ave Attend	2003 Capacity Used
St. Catherine of Siena	4	665	2660	990	37	4	720	2880	1013	35	3	665	1995	885	44	3	700	2100	809	39
St. Louis	6	516	3096	2319	75	6	516	3096	2204	71	5	640	3200	2258	71	5	640	3200	2129	67
Church of the Transfiguration	4	700	2800	1751	63	4	700	2800	1957	70	4	720	2880	1706	59	4	700	2800	1494	53
Pitts-Mendon Total	14	1881	8556	5060	59	14	1936	8776	5174	59	12	2025	8075	4849	60	12	2040	8100	4431	55

Average Weekend Mass Attendance



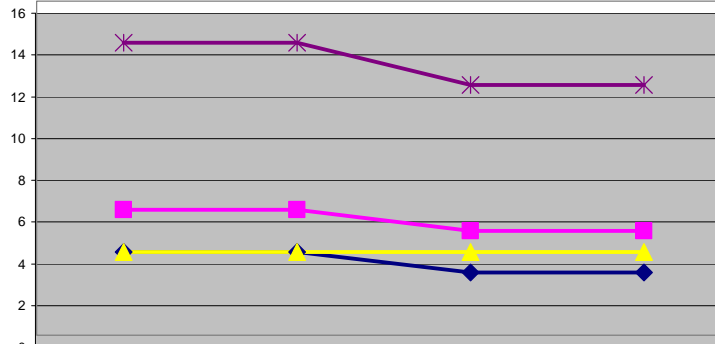
Year	St. Catherine of Siena	St. Louis	Church of the Transfiguration
2000	990	2319	1751
2001	1013	2204	1957
2002	885	2258	1706
2003	809	2129	1494

Ave Worship Capacity Used (Percent)



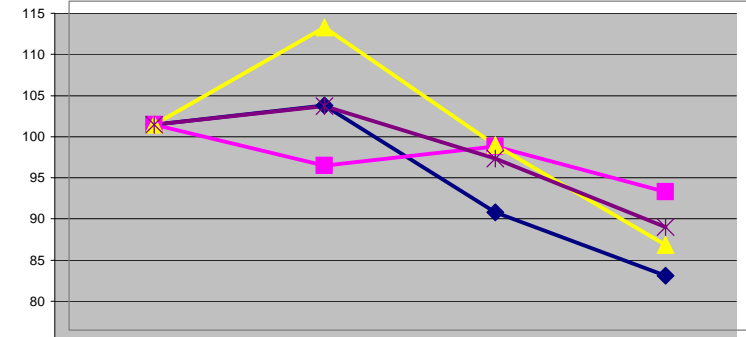
Year	St. Catherine of Siena	St. Louis	Church of the Transfiguration	Pitts-Mendon Total
2000	37	75	63	59
2001	35	71	70	59
2002	44	71	59	60
2003	39	67	53	55

Number of Masses



Year	St. Catherine of Siena	St. Louis	Church of the Transfiguration	Pitts-Mendon Total
2000	4	6	4	14
2001	4	6	4	14
2002	3	5	4	12
2003	3	5	4	12

Change in Ave Weekend Attendance (2000=100)



Year	St. Catherine of Siena	St. Louis	Church of the Transfiguration	Pitts-Mendon Total
2000	100	100	100	100
2001	102	95	112	102
2002	89	97	97	96
2003	82	92	85	88